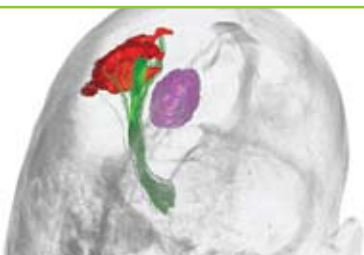


# SYNERGY™ CRANIAL

NeuroNavigation Solution

## SEE THE BIGGER PICTURE



**Medtronic**

*Alleviating Pain · Restoring Health · Extending Life*

### SIMPLICITY INNOVATION

Medtronic Navigation has been navigating the human body for nearly two decades. The science, technology and engineering have always been exceptional. Now through the power of user-centered design, navigation has evolved into a simple, intuitive, personalized experience.

Working hand-in-hand with neurosurgeons and operating room staff we have developed a navigation solution that is designed for the busy surgeon and surgical team. With this latest evolution of neuronavigation, the system is personalized to you, ensuring navigation simplicity and efficiency, thereby minimizing complexities and maximizing benefit. The Synergy™ Cranial neuronavigation system is your trusted solution, now with a new elegant, intuitive flow and feel.

### PERSONALIZED EFFICIENCY AT YOUR FINGERTIPS

- + **Choice.** Personalize equipment set up, instruments, and navigation views for a consistent and predictable navigation interaction case-after-case. This provides increased peace of mind and confidence in your navigation... even with staff rotations.
- + **Simplicity.** Gain time and cost savings as the navigation flows smoothly and consistently every time.
- + **Flexibility.** Synergy™ Cranial system adapts to your needs. With both AxiEM™ and optical tracking technologies at the ready, track a flexible catheter with electromagnetic navigation at 9:00 am and optically guide a biopsy needle at 11 am.
- + **Advanced Instrumentation.** Includes procedure specific workflows for AxiEM™ shunt placement and AxiEM™ tumor resections. Ideal for patients that cannot tolerate a head holder frame or for procedures where localization of non-rigid instrumentation, such as ventricular catheters, is critical.

### SYNERGY™ CRANIAL SPECIFICATIONS:

- + **Procedure Intelligence.** Customized procedure workflow for resections, biopsies and ventricular shunts.
- + **Patient Registration.** Non-fiducial and fiducial-based patient registration options including; Tracer™, Touch-N-Go™ and Point Merge™
- + **Tracking Technologies.** AxiEM™ and optical tracking capabilities are included as standard to enable procedure flexibility.
- + **Data Command & Processing Performance.**
  - High definition, wide screen image capabilities – for easier viewing in the OR.
  - Maximized image area for clear view of key information.
  - New extended camera field of view creating a larger working volume, and less time spent on instrument/patient positioning.
  - Supports MR and CT patient exams.
  - Surgeon mouse and surgeon monitor integration – for optimal control of the StealthStation® System.

